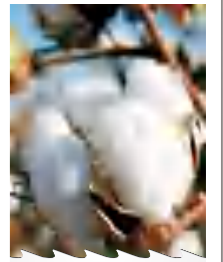


BRUJAS[®]
SINCE 1908



BRUJAS TEXTILE TECH(SHANGHAI)CO.,LTD
Add : Room 712 ,No.58, Jinxin Road
Shanghai-201206,China
Tel : +86-21-58201380
E-mail : brujas@brujas1908.com
Website: www.brujas1908.com



CLOTHINGS FOR COTTON CARDS



BRUJAS was founded in 1908 by the Brujas family in Terrassa Spain.

BRUJAS has made a joint venture with **White Shark** since 2008.

BRUJAS products are internationally marketed by Brujas Textile Tech (Shang Hai) CO.,LTD.

BRUJAS is a ISO9000 quality approved company and is known as a high quality card clothing product suitable for all carding applications.

PERFECTO SEMI-PINNED CLEAN WIRE TECHNOLOGY

The production efficiency of revolving flat cards has increased continuously and in particular during the recent years. This has resulted in increasing demands made upon the card to withstand the increased carding forces and wear resistance.

Normally the standard finish is black for metallic wire that results from the manufacturing process.

The wire can have small defects such as burrs, carbon deposits and scale that damage the fibre at start up.

Moreover the harder the steel the longer it takes for these defects to wear off resulting in damaged fibre and lower performance.

In order to meet these increasing demands for quality high production carding **BRUJAS** has developed the **PERFECTO SEMI-PINNED** finish for cylinders, doffers, lickerins, stationary flats, feed rollers, stripping rollers and blowroom wires. **PERFECTO** is a unique special process to remove burrs and dirty carbon deposits associated with the manufacturing process. This gives a silver, clean, burr free finish that leaves the wire smooth and contamination free like a semi-pinned shape resulting in the following benefits as compared to conventional black wire:

- Quicker start up after initial mounting.
- Shorter running in time as burr free and smooth so protects the fibre from breakage as a more gentle carding action.
- Closer settings after initial mounting as the wire is less aggressive so protects the fibre from damage.
- Higher nep removal efficiencies and lower short fibre content after initial mounting and throughout the service life of the wire.
- The card can be put into full production earlier thereby increasing productivity.

BRUJAS THE HEART OF CARDING PROTECT YOUR BUSINESS



Conical teeth technology & Surface strengthening treatment

Special tooth shape design,

it's test proved that the neps removal rate can reach more than 90%, the short stape rate can be reduced by 0.5% to 1.0%.

The hardness of the tooth tip is increased from HV860 to HV1200±30, and the processing capacity of cotton fiber can reach 2000 tons.

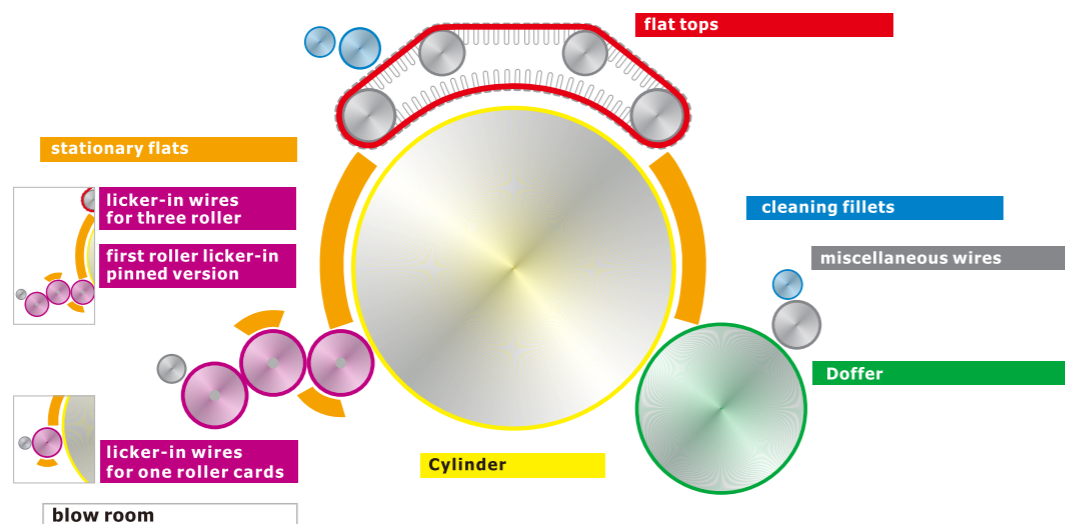
CAMEL SHAPE (CS)

For medium and fine cotton yarn production >50kg/h, <80kg/h

DOUBLE SHAPE (DS)

For cotton yarn, production > 100kg/h

JINTRAN 1816



CYLINDER WIRES

BRUJAS cylinder wires are available in the following designs:

- 1.80mm** high clothings are available with a tooth geometry preventing loading with seed coat and trash.
- 2.00mm** high clothings are available in **CAMEL SHAPE (CS)**, **DOUBLE SHAPE (DS)** tooth geometry.
- 2.50mm** high clothings for applications on high production and conventional cards and all synthetic applications.
- BRUJAS** cylinders standard supply is **MAXIMO** high quality special micro-alloy long life steel.
- BRUJAS SUPRIMO** high quality nano-alloy super life steel for cylinders.
- BRUJAS** cylinder are available in **MAXIMO**, **PERFECTO** and **JINTRAN** finish.

1.80mm-2.00mm SUPRIMO, MAXIMO PERFECTO CYLINDERS

Wire type	Height	Angle	Pitch	Rib	PPSI	Application	Tooth shape
C1835 x 1008CS	1.80	35	1.60	0.40	1008	For medium and fine cotton combed > 50 < 80kg/h	
C1840 x 1008DS	1.80	40	1.60	0.40	1008	For cotton, Carded >100kg/h	
C2040 x 950DS	2.00	40	1.70	0.40	950		
C2040 x 860DS	2.00	40	1.70	0.45	860	For medium, fine and super fine cotton RS combed > 45 < 70kg/h: RS carded > 50 < 90kg/h OE < 80kg/h: Airjet < 60kh/h	
C2040 x 950	2.00	40	1.70	0.40	950		
C2035 x 950	2.00	35	1.70	0.40	950	For medium, fine cotton and universal blends RS carded > 50 < 70kg/h: RS combed > 45 < 70kg/h	
C2030 x 950	2.00	30	1.70	0.40	950		
C2035 x 945	2.00	35	1.50	0.45	945	For medium cotton, man-made fibres and universal blends RS carded > 40 < 60kg/h: OE > 80kg/h	
C2030 x 945	2.00	30	1.50	0.45	945		
C2040 x 860	2.00	40	1.50	0.50	860	For medium, fine cotton and universal blends RS carded > 50 < 70kg/h: RS combed > 45 < 70kg/h	
C2035 x 860	2.00	35	1.50	0.50	860		
C2030 x 860	2.00	30	1.50	0.50	860	For medium cotton, man-made fibres and universal blends RS carded > 40 < 60kg/h: OE > 80kg/h	
C2030 x 720	2.00	30	1.50	0.60	720		
C2025 x 660	2.00	25	1.60	0.60	660		

2.50mm-2.80mm MAXIMO & PERFECTO CYLINDERS

Wire type	Height	Angle	Pitch	Rib	PPSI	Application	Tooth shape
C2525 x 945	2.50	25	1.50	0.45	945	For medium, fine cotton, microfiber and universal blends RS carded > 35 < 50kg/h: RS combed > 30 < 40kg/h	
C2530 x 860	2.50	30	1.50	0.50	860		
C2525 x 860	2.50	25	1.50	0.50	860	For medium fine man-made fibres 1.3-1.7dtex RS > 50 < 70kg/h	
C2520 x 800	2.50	20	1.60	0.50	800		
C2525 x 760	2.50	25	1.70	0.50	760	For medium man-made fibres 1.3-1.7dtex and blends RS > 50 < 70kg/h	
C2530 x 720	2.50	30	1.50	0.60	720		
C2525 x 720	2.50	25	1.50	0.60	720	For medium man-made fibres 1.7-2.2dtex RS > 50 < 70kg/h	
C2520 x 720	2.50	20	1.50	0.60	720		
C2520 x 660	2.50	20	1.50	0.65	660	For medium man-made fibres 1.7-2.2dtex RS > 50 < 70kg/h	
C2520 x 630	2.50	20	1.60	0.65	630		
C2520 x 620	2.50	20	1.50	0.70	620	For cotton, bleached cotton, special fibres and breakers RS carded > 40 < 50kg/h	
C2520 x 570	2.50	20	1.60	0.70	570		
C2815 x 720	2.80	15	1.50	0.60	720		
C2820 x 830	2.80	20	1.30	0.60	830		

HEART OF CARDING

DOFFER WIRES

BRUJAS doffers are available in either **PERFECTO** and standard black finish.

The doffer wires are available in both straight and curved designs, with or without striations.

BRUJAS EXACTO doffers with excellent punching quality, aqualine points and tight manufacturing tolerances can be set accurately and are universally applicable and maintenance free.

PLAIN EXACTO DOFFERS

Wire type	Height	Angle	Pitch	Rib	PPSI	Application	Tooth shape
D4030 x 500	4.00	30	1.80	0.70	500	For cotton, universal blends and man-made fibres	
D4030 x 395	4.00	30	1.80	0.90	395		
D4030 x 365B	4.00	30	2.00	0.90	365	For coarse, medium and fine cotton	
D4030 x 340	4.00	30	2.10	0.90	340		
D4535 x 300	4.50	35	2.10	1.00	300	For high speed cards	
D4530 x B8	4.50	30	1.80	0.70	510		
D4530 x B9	4.50	30	2.00	0.70	460		
D5030 x 340	5.00	30	2.10	0.90	340		

STRIATED EXACTO DOFFERS

Wire type	Height	Angle	Pitch	Rib	PPSI	Application	Tooth shape
D4030 x 400R	4.00	30	2.00	0.80	400	For high speed cotton, man-made fibres	
D4030 x 365BR	4.00	30	2.00	0.90	365	For high speed cotton and universal blends	
D4030 x 340R	4.00	30	2.10	0.90	340		For Rieter cards for cotton, universal and man made fibres
D4030 x 300R	4.00	30	2.10	1.00	300		
D4530 x 300R	4.50	30	2.10	1.00	300		
D5030 x 340R	5.00	30	2.10	0.90	340		

LICKERIN WIRES

BRUJAS lickerins standard supply is only in **MAXIMO** high quality special micro-alloy long life steel.

BRUJAS lickerins are available in either **PERFECTO** and standard black finish.

PERFECTO semi-pinned shaped lickerins are smooth, burr free and clean. This allows gentle opening of the fibre tufts protecting the fibre from damage and maintains the overall length resulting in less fibre breakage and lower short fibre content caused by the lickerin as compared to conventional black wire.

GROOVED LICKERINS

Wire type	Height	Angle	Pitch	Rib	PPSI	Application	Tooth shape
L5515 x 4.5TPI	5.50	15	5.60	Var	36	For coarse, medium and fine cotton	
L5510 x 7.0TPI	5.50	10	3.60	Var	56		
L5510 x 6.0TPI	5.50	10	4.20	Var	48		
L5510 x 5.0TPI	5.50	10	5.00	Var	40		
L5510 x 4.5TPI	5.50	10	5.60	Var	36	For fine cotton, universal blends, fine and medium man made fibres	
L5505 x 4.5TPI	5.50	5	5.60	Var	36		
L5505 x 4.0TPI	5.50	5	6.30	Var	32	For medium and long man made fibres	
L5500 x 4.5TPI	5.50	0	5.60	Var	36		

INTERLOCKING LICKERINS

Wire type	Height	Angle	Pitch	Rib	PPSI	Application	Tooth shape
L5000 x 32V8	5.00	0	6.30	3.00	32	For medium and long man-made fibres	
L5005 x 32V8	5.00	5	6.30	3.00	32	For fine and medium man-made fibres	
L5000 x 40V8	5.00	0	5.00	3.00	40	For fine and medium man-made fibres	
L5005 x 40V8	5.00	5	5.00	3.00	40	For fine cotton, universal blends and man-made fibres	
L5010 x 40V8	5.00	10	5.00	3.00	40	For medium and coarse cotton	
L5010 x 60V12	5.00	10	5.00	2.10	60	For Rieter C50/51 cards for cotton	
L5005 x 60V12	5.00	5	5.00	2.10	60	For Rieter C50/51 cards for man made fibres	
L5005 x 115V12	5.00	5	2.60	2.10	115	For Rieter C50/51 cards, universal blends and man-made fibres	
L5010 x 115V12	5.00	10	2.60	2.10	115	For Rieter C50/51 cards for cotton	
L5020 x 115V12	5.00	20	2.60	2.10	115	For Rieter C60/C70 second lickerin	
L5020 x 160V16	5.00	20	2.50	1.50	160	For the second lickerin of triple lickerin cards	
L5010 x 210V16	5.00	10	2.00	1.50	210	For Rieter C50/51 Hi-Per cards for OE	
L5020 x 210V16	5.00	20	2.00	1.50	210	For the third lickerin of triple lickerin cards	

FLAT TOPS

The **BRUJAS** range of flat tops have been specially designed to meet the wide variety of carding machines and fibre applications.

- The standard supply is only in **SUPER HI TENSILE** top quality special micro-alloy long life steel.
- The tips of the wires are additionally extra hardened to prolong the service life and keeps the flat wire shaper for longer.
- Bi-convex wire cross-sections and special setting patterns optimise the flat tops performance and stability under the high carding forces.
- The wire points are precision ground to produce sharp level tips for accurate setting and performance.
- The foundation fabric consists of up to seven layers manufactured with a tight weave using ring spun yarns covered with a rubber synthetic face to grip the wires tightly to maintain stability under the increased carding forces.

DIAMANTOP	PPSI	Application
BPD28	280	For medium man-made, special fibres, wool and bleached cotton
BPD32	320	
MONOTOP	PPSI	Application
BMX35	350	For coarse, medium cotton, man made and regenerated fibres
BMX40	400	
BMT33	330	
BMT40	400	For coarse, medium cotton, man made fibres and universal blends
BMT45	450	
BMT50	500	For medium, fine cotton and microfibers
BMT52	510	For medium and fine cotton
SUPRIMOTOP	PPSI	Application
BST29	290	For coarse, medium cotton and man made fibres
BST36	360	For medium, fine cotton, man made fibres and universal blends
BST45	450	
SPACIOTOP	PPSI	Application
BPT32	320	For coarse, medium cotton and man made fibres
BPT43	430	For medium, fine cotton and universal blends
BPT45	450	
BPT48	480	For super fine, fine and medium cottons
BPT52	520	
BPT55	550	
NUEVOTOP	PPSI	Application
BNT40	400	For coarse, medium cotton, man made fibres and universal blends
BNT45	450	For medium, fine cotton and universal blends
BNT55	510	For medium and fine cotton
BNT60	550	For fine and super fine cotton

SETTING PATTERNS

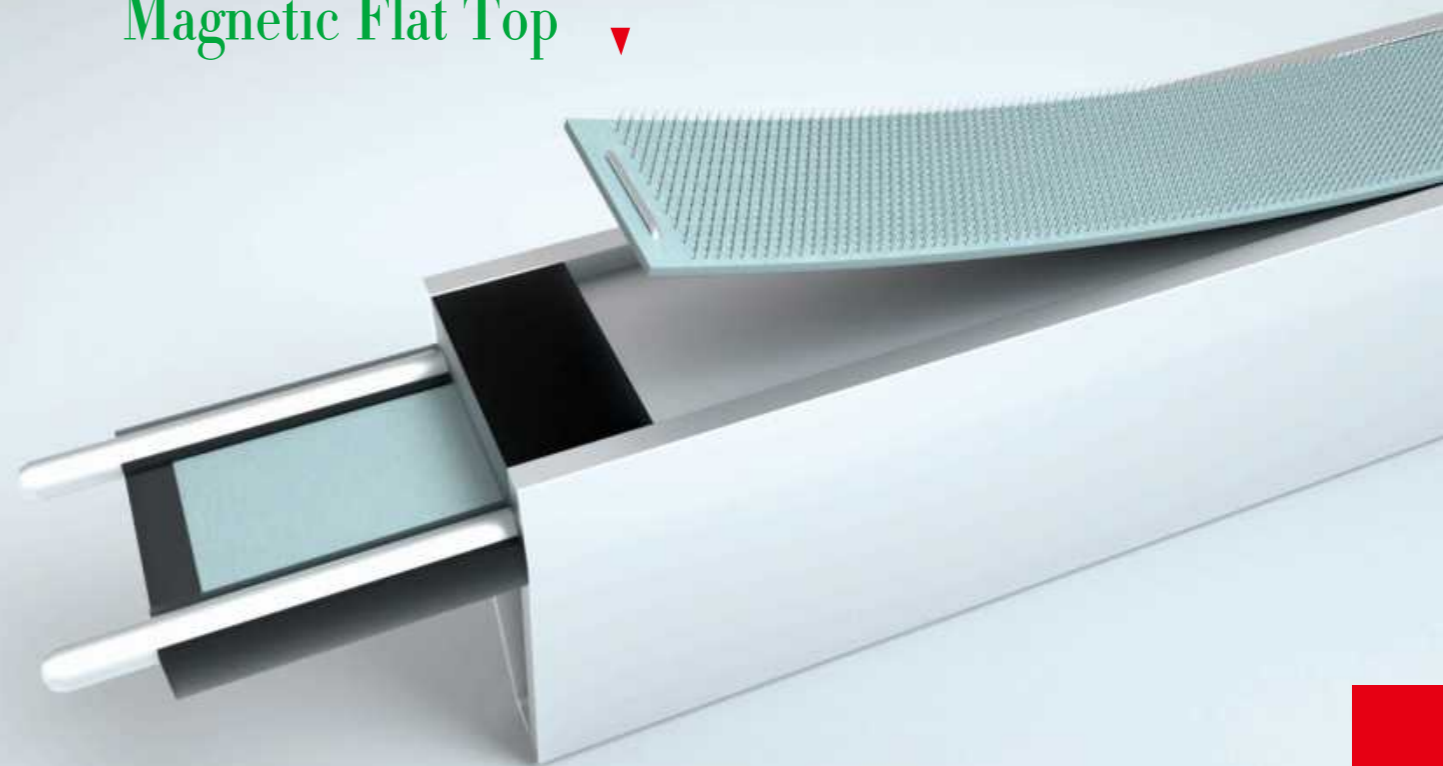
DIAMANTOP	MONOTOP	SUPRIMOTOP	SPACIOTOP	NUEVOTOP

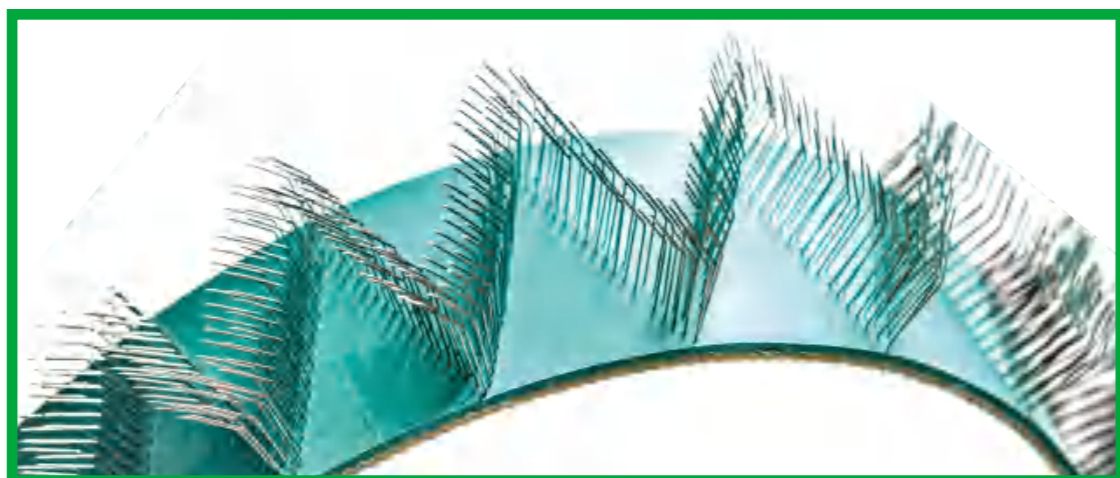
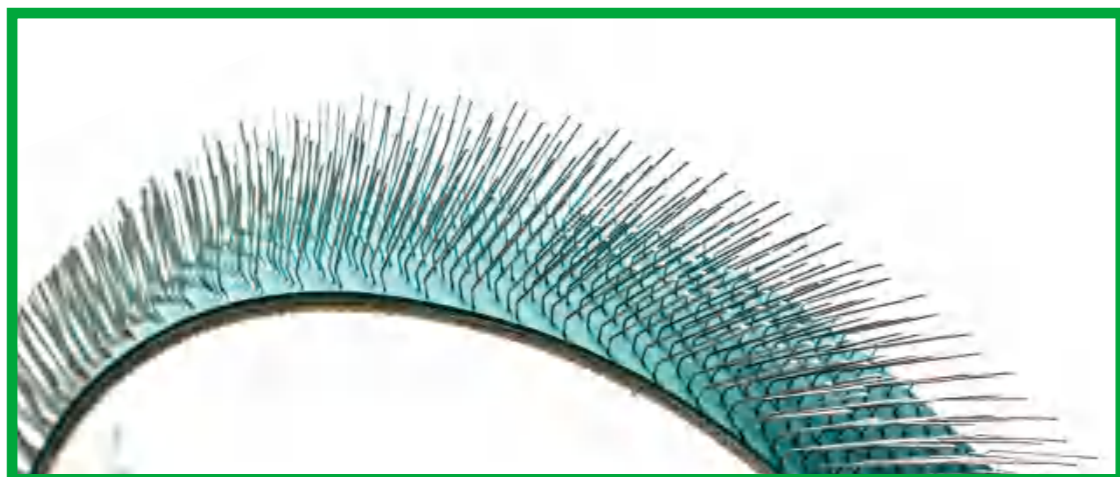
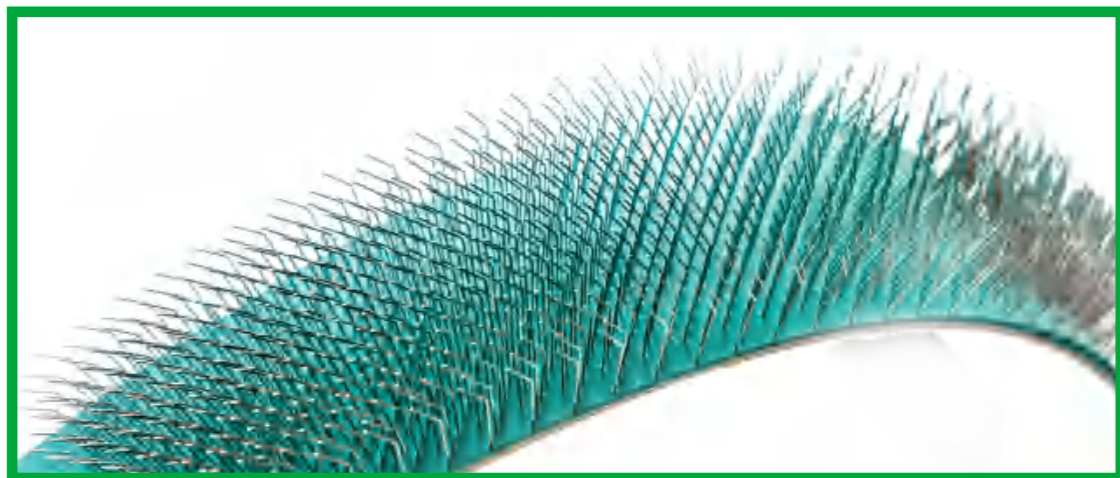
HEART OF CARDING

◀ Flat Tops



Magnetic Flat Top ▼



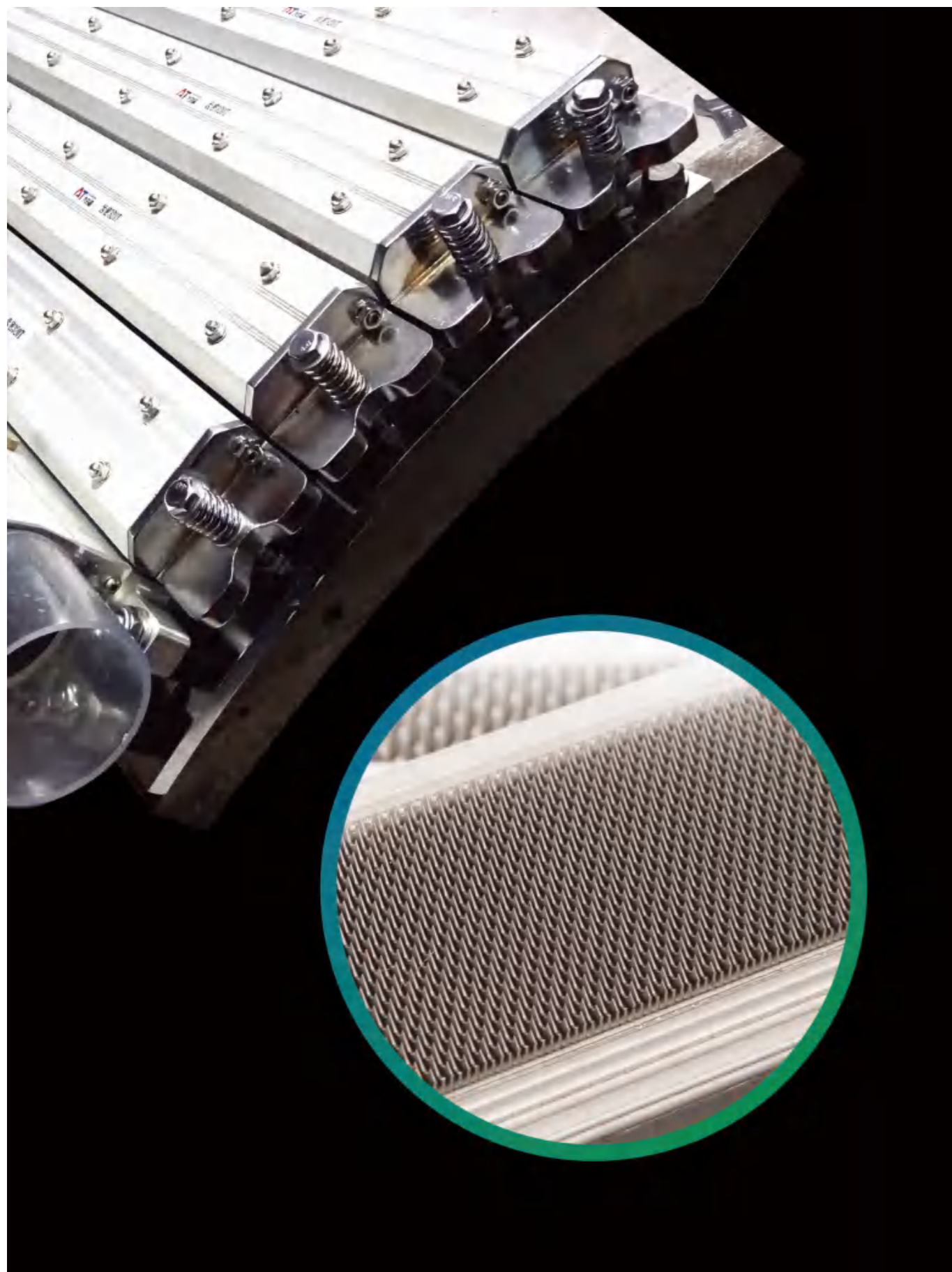


HEART OF CARDING

CLEANING FILLETS

BRUJAS cleaning fillets are available for all makes and models of cards. The fillets are supplied in either **STAINLESS** steel or high carbon steel depending upon the application. The **STAINLESS** steel fillets are smoother so resist loading and run cleaner. They have a greater flexibility as compared to high carbon wires so resist breakage and do not distort consequently easier to clean with subsequent longer life.

Trutzschler	Units	Product description	Fillet shape
TR-DS 38mm	50m	Trutzschler TR-DS Stainless Top cleaning fillet (10m/set)	
TR-DP 25mm	52.5m	Trutzschler TR-DP Stainless Top cleaning fillet (10.5m/set)	
TR-AP 19mm	75m	Trutzschler TR-AP Stainless T/O roller cleaning fillet (15m/set)	
Crosrol			
CT/CR 19mm	80m	Crosrol CT/CR Stainless T/O roller cleaning fillet (16m/set)	
8ROW	ea	Crosrol 8ROW Top cleaning strips (2/card)	
10ROW	ea	Crosrol 10ROW Top cleaning strips (2/card)	
CT/H 25mm	60m	Crosrol CT/HS Stainless Top cleaning fillet (12m/set)	
CT/LS 38mm	40m	Crosrol CT/LS Stainless Top cleaning fillet (8m/set)	
Rieter			
CR1	ea	Rieter CR1 clearer rod (1/card)	
DR11 25mm	55m	Rieter DR11 Stainless T/O roller cleaning fillet (11m/set)	
DR17 19mm	60m	Rieter DR17 Stainless T/O roller cleaning fillet (12m/set)	
DBZ4 46mm	35m	Rieter DBZ4 Stainless T/O roller cleaning fillet (7m/set)	
DBZ8 25mm	77.5m	Rieter DBZ8 Stainless T/O roller cleaning fillet (15.5m/set)	
FB21	ea	Rieter FB21 Top cleaning strip (2/card)	
FB14	ea	Rieter FB14 Top cleaning strip (2/card)	
FB24	ea	Rieter FB24 Top cleaning strip (2/card)	
40ZQ	ea	Rieter 40ZQ Top cleaning strip (1/card) Rieter part 10245851	
60ZQ	ea	Rieter 60ZQ Top cleaning strip (1/card) Rieter part 10111492	
40ZQ	ea	Rieter 40ZQ Top cleaning strip (1/card) Rieter part 10110265	
SAURER			
BPBZJ-1 38mm	61m	96-2 Stainless Top cleaning fillet	
BPBZJ-2 25mm	74m	96-3 Stainless Top cleaning fillet	
BPBZJ-3 19mm	74m	96-4 Stainless T/O roller cleaning fillet	
Zhengzhou			
ZJ-1 38mm	61m	ZTM ZJ-1 Stainless Top cleaning fillet	
ZJ-2 25mm	82m	ZTM ZJ-2 Stainless Top cleaning fillet	
ZJ-3 19mm	82M	ZTM ZJ-3 Stainless T/O roller cleaning fillet	
Qingdao			
QJ-1 38mm	61m	QTM QJ-1 Stainless Top cleaning fillet	
QJ-2 25mm	82m	QTM QJ-2 Stainless Top cleaning fillet	
QJ-3 19mm	82M	QTM QJ-3 Stainless T/O roller cleaning fillet	
General Fillets			
All cards makes and models	61m	Standard Burnishing fillet 61m rolls	
	61m	Standard Stripping Fillet 61m rolls	
	61m	Zig Zag flat cleaning fillet 61m rolls	
	61m	Strip cum Stripping flat cleaning fillet 61m rolls	
	61m	MK I flat cleaning fillet 61m rolls	
	61m	MK II flat cleaning fillet 61m rolls	
	61m	Flat cleaning fillet	
	6	Hand Cards No 27's 90mm x 578mm & 63mm x 559mm	
	6	Hand Cards No 30's 90mm x 265mm & 36mm x 260mm	
	6	Hand Cards No 30's 90mm x 265mm & 36mm x 260mm clipped	
6	Hand Card Holders		



HEART OF CARDING

STATIONARY FLATS

It is at the carding segments, particularly the pre-carding zone, that the highest carding forces are present. The **BRUJAS** range of fixed flats has been designed to be able to fit all makes and models of cards for all applications.

- The standard supply is only in **MAXIMO** high quality special micro-alloy long life steel.
- The stationary flats are available in **PERFECTO** finish.
- Only micro-alloy steel fixed flats can be used for longer service life, constant quality and reduced maintenance.
- The geometries of the wires used are designed to enable good fibre retention, and allow the flats to run clean.
- The manufacturing technology ensures that the stationary flats are very precise to allow close accurate settings.
- Designs available for the complete range of cards and retrofit systems.

PRODUCT TYPES	EXTRUSIONS
SUPERSLIDE BSST BSSTVT Designed to fit Crosrol, Trutzschler, Rieter and many types of aluminium bars	
MINISLIDE BMST BMSVT Designed to fit Chinese systems with aluminium bars	
EXTRASLIDE BEST BESTVT Designed to fit Trutzschler cards and certain types of retrofit aluminium bars	
SUPERSCREW BSSL Designed to fit Lakshmi card and C-Cleaners	
OPTICLIP BOCT BOCTVT Integral clips for easy clipping to aluminium or cast iron bars	
LTFIT BLT Designed to fit Rieter and Trutzschler original underlickerin segments and blowrooms	
HTFIT BHT Designed to fit Rieter C4 original underlickerin segments	
DTFIT BDT Designed to fit Jintan original and other underlickerin segments	
TRSFIT BTRS underlickerin segment Designed to fit Trutzschler original cast iron underlickerin segments	
TRCFIT BTRC underlickerin segment Designed to fit Trutzschler original triple lickerin segments	

Stationary flats and ppsi availability

Wire type	PPSI	PPSI	PPSI	PPSI	PPSI	PPSI	PPSI	PPSI	PPSI
Superslide BSST		60	90	140	240	320	420	550	640
Superslide BSSVT								550	
Minislide BMST			90	140	240	320	420	550	640
Minislide BMSTVT								550	
Extraslide BEST		60	90	140	240	320	420	550	640
Extraslide BESTVT								550	
Superscrew BSSL			90	140	240	320	420	550	640
Opticlip BOCT			90	140	240	320	420	550	640
Opticlip BOCTVT								550	
LTFIT BLT		60	90						
HTFIT BHT		60	90						
DTFIT BDT		60	90						
TRSFIT BTRS		60	90						
TRCFIT BTRC			90						

STRIPPING AND REDIRECTING WIRES

BRUJAS stripping wires are available in **PERFECTO** and **BRUSHED** finish.

Due to higher speeds the stripping wires have to be accurate, smooth and defect free to allow efficient stripping from the doffer and web transfer to the take off rollers, resulting in better parallelisation of the fibre.

Therefore the **PERFECTO** finish stripping wires ensures optimum stripping and releasing action.

Wire type	Height	Angle	Pitch	Rib	PPSI	Application	Tooth shape
35-15 x 3210 R2	3.50	-15	3.20	1.00	201	Rieter	
40-27 x 3418 CS4	4.00	-27	3.40	1.80	114	Crosrol, Trutzschler and the majority of cards	
40-10 x 3010	4.00	-10	3.00	1.00	215	Special applications	

FEED ROLLER WIRES

BRUJAS feed rollers are available in **PERFECTO** and **BRUSHED** finish.

In order to reduce the loading and lapping of the feed rollers brushed finish is supplied as standard.

PERFECTO feed rollers are available for the optimum clean anti-loading trouble free running.

Wire type	Height	Angle	Pitch	Rib	PPSI	Application	Tooth shape
45-42 x 4530 TR21	4.50	-42	4.50	3.00	48	Trutzschler	
3000 x 3830 FR90	3.00	0	3.80	3.00	57	Rieter chute feed rollers	
3010 x 3830 FR91	3.00	10	3.80	3.00	57		
30-40 x 3830 FR130	3.00	-40	3.80	3.00	57		
V6 5017 x 6642 RA2	5.00	17	6.60	4.23	23	Rieter and Crosrol	
V6 5020 x 1242 TR5	5.00	20	11.90	4.23	13	Trutzschler	
V12 2500 x 2820 TR20	2.50	0	2.83	2.00	114		

SPECIAL APPLICATION WIRES

BRUJAS special application wires are used for cylinder, worker, stripper, doffer and transfer wires for specific machine and fibre applications.

Different finishes are available for different applications.

Wire type	Height	Angle	Pitch	Rib	PPSI	Application	Tooth shape
3215 x 448	3.20	15	1.80	0.80	445	For breast cylinders on Barcons, Bonino and Rosique cards	
3215 x 400	3.20	15	1.80	0.90	400		
3210 x 400	3.20	10	1.80	0.90	400		
3220 x 400	3.20	20	1.80	0.90	400		
3210 x 360	3.20	10	2.00	0.90	360		
3220 x 220	3.20	20	3.20	0.90	220	For workers, strippers and transfer wires on Barcons, Bonino and Rosique cards	
4030 x 190	4.00	30	3.60	0.95	190		
4030 x 270	4.00	30	2.50	0.95	270		
4030 x 320	4.00	30	2.10	0.95	320		
4035 x 270	4.00	35	2.50	0.95	270		
4040 x 270	4.00	40	2.50	0.95	270		
5040 x 180	5.00	40	3.60	1.00	180		
4020 x 210	4.00	20	2.50	1.20	210	For transfer wires for Crosrol and conventional tandem cards	
4040 x 120	4.00	40	3.60	1.50	120		
4010 x 110	4.00	10	3.20	1.80	110		

HEART OF CARDING

BLOWROOM WIRES

BRUJAS blowroom wires are available in **PERFECTO** and **BRUSHED** finish.

During the initial opening particularly at very high production rates in the more aggressive blowrooms the fibres become damaged. In order to reduce this brushed blowroom wires are supplied as standard.

PERFECTO semi-pinned shaped blowroom wires are smooth, burr free and clean.

This allows gentle opening of the fibre tufts protecting the fibre from damage maintaining the overall length resulting in less fibre breakage and a lower short fibre percentage in the blowroom as compared to conventional black wire.

Wire type	Height	Angle	Pitch	Rib	PPSI	Application	Tooth shape
1000 x 1825 ERM 20/0	10.00	0	18.20	2.50	14	Jintan, Lakshmi, Rieter	
1010 x 1825 ERM 20/10	10.00	10	18.20	2.50	14		
1000 x 1025 ERM 10/0	10.00	0	10.00	2.50	26		
1010 x 1025 ERM 10/10	10.00	10	10.00	2.50	26		
10-10 x 1222 A356	10.00	-10	12.25	2.20	24	Crosrol chute feed	
5925 x 2610 B662	5.90	25	26.00	1.05	24	Qingdao	
4035 x 1014 B455	4.00	35	10.20	1.40	45		
V5 8515 x 9951	8.50	15	9.90	5.08	13	Marzoli	
V5 8520 x 9951	8.50	20	9.90	5.08	13		
V6 55-06 x 8142 F100	5.50	-6	8.10	4.23	19	Crosrol, Finetex, Hegerth, Trumac, Trutzschler and Zhengzhou	
V6 5510 x 8542 TR10	5.50	10	8.50	4.23	18		
V6 5510 x 8542 TR15	5.50	10	8.50	4.23	18		
V6 55-10 x 5442 TR11	5.50	-10	5.40	4.23	28		
V6 5515 x 5042 TR35	5.50	15	5.00	4.23	31		
V6 5520 x 8542	5.50	20	8.50	4.23	18		
V6 5520 x 5042 TR2	5.50	20	5.00	4.23	31		
V6 5520 x 5042 TR3	5.50	20	5.00	4.23	31		
V6 5520 x 5042 TR50	5.50	20	5.00	4.23	31		
V6 5530 x 6542	5.50	30	6.50	4.23	23		
V6 5530 x 6542 TR8	5.50	30	6.50	4.23	23		
V6 55-36 x 5542 TR6	5.50	-36	5.50	4.23	28		
V6 6010 x 1542 NT1A	6.00	10	15.00	4.23	10		
V6 6020 x 7842 NT2A	6.00	20	7.80	4.23	19		
V6 7510 x 1542 TR13	7.50	10	15.00	4.23	10		
V6 7510 x 1542 TR14	7.50	10	15.00	4.23	10		
V6 7510 x 7542 CR1	7.50	10	7.50	4.23	20		
V6 7520 x 1042 TR4	7.50	20	10.00	4.23	15		
V8 5020 x 1432 TR7	5.00	20	14.50	3.17	14		
V8 5520 x 6532	5.50	20	6.50	3.17	31		
V8 6020 x 6332 NT3A	6.00	20	6.30	3.17	32		
V10 4740 x 5325	4.70	40	5.30	2.54	48		
V10 4200 x 1625	4.20	0	16.60	2.54	20		

OE WIRES

Type of wires and application.

Wire type	Height	Angle	Pitch	Rib	PPSI
OK40	3.60	25	2.60	0.90	115
OK40B	3.60	25	2.60	0.90	115
OK58	3.60	15	3.20	0.90	94
OK61	3.60	15	3.90	0.90	76
OK74A	3.60	25	5.00	0.90	66
OK74B	4.00	25	5.00	1.00	60
OS21	3.60	12	3.00	0.90	100
OB20	3.60	25	2.10	0.90	143
OB20A	4.00	25	2.10	1.00	143
OB174	3.60	25	2.10	1.00	143
C74	4.00	25	6.00	1.00	50
CM2A	3.60	0	5.00	0.90	60
MK88	3.60	0	3.90	0.90	76



Material	Types of wire depending on the model of rotor spinning machine and yarn count		
Cotton	Ok40	Ob174	Ob20
Polyester	MK88	OK61	OK37
Acrylic	OS21	OK61	OK58
Cotton/Polyester	OK61	OS21	OK40
Cotton/Acrylic	OK61	OS21	OK58
Modal	OS21	OK61	OK40
Viscose	OK61	OK40	OB174
Flax/Cotton	OB20	OK40	OK74
Polyester/Viscose	Ok61	Os21	Mk88



DC (Diamond & Chrome Coating)



DN (Diamond & Nickel Coating)

BRUJAS opening ring is composed of coated wire and Alu-Mag alloy ring, the weight is only half compared to the steel ring, help to reduce energy consumption.

HEART OF CARDING

All aluminum combined opening roller

The design of detachable and easy to change the opening ring.

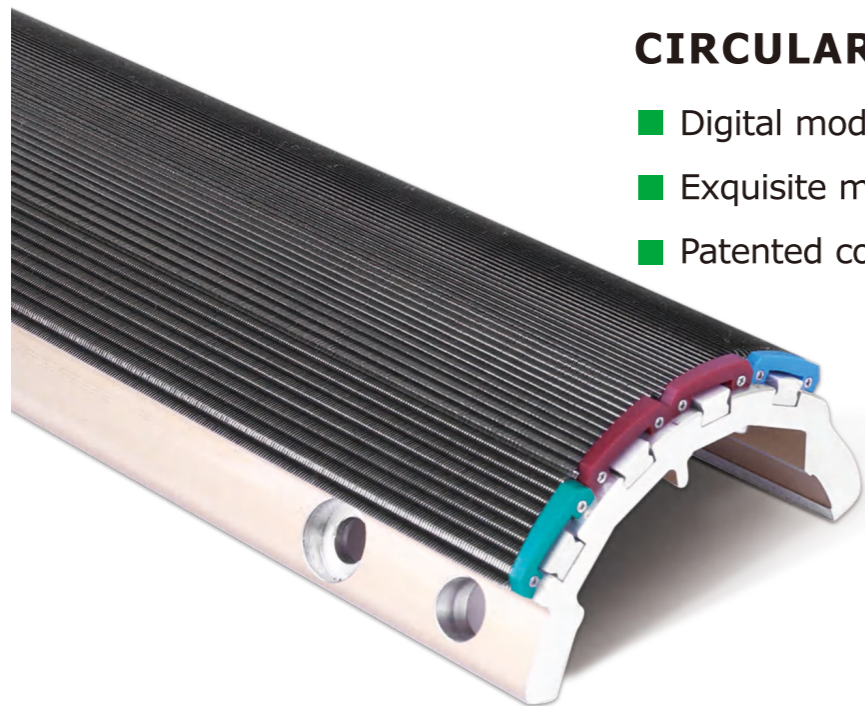


Suitable for Rieter, Schlafhorst, Oerlikon, Rifa, TaiTan, Jingwei machine.

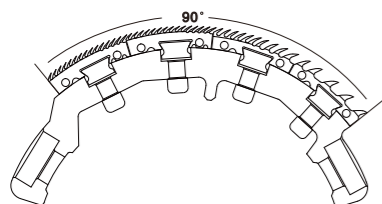


CIRCULAR COMB

- Digital modeled tooth structure design
- Exquisite manufacturing technology
- Patented conical tooth, sharp and smooth



Comber Cylinder - Conventional Carding Assembly (90°)



BS-2095

Orange	Red
Orange	Yellow
Red	White
Blue	White

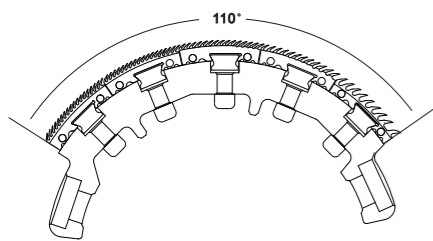
About 28080 teeth

BS-3606

Green	Blue
Black	Orange
Red	Black
Blue	Black

About 35600 teeth

Comber Cylinder - Conventional Carding Assembly (110°)



BS-4607

Green	Blue
Black	Orange
Red	White
Red	Black
Blue	Black

About 45440 teeth

BS-4608

Orange	Green
Red	White
Red	Black
Blue	Black
Blue	Black

About 51840 teeth

HEART OF CARDING



BS-606

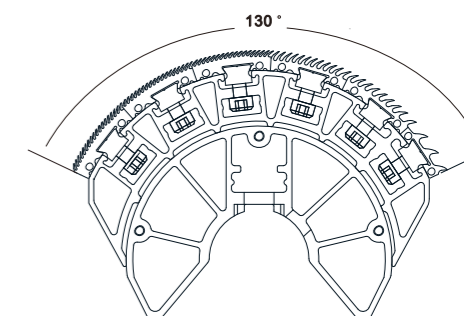
Silver	Silver
Green	Blue
Black	Orange
Red	Orange
Red	Green
Blue	Green

About 42420 teeth

BS-607

Silver	Silver
Green	Blue
Black	Orange
Red	White
Red	Green
Blue	Green

About 44260 teeth



Customizable according to customer requirements

BS-608

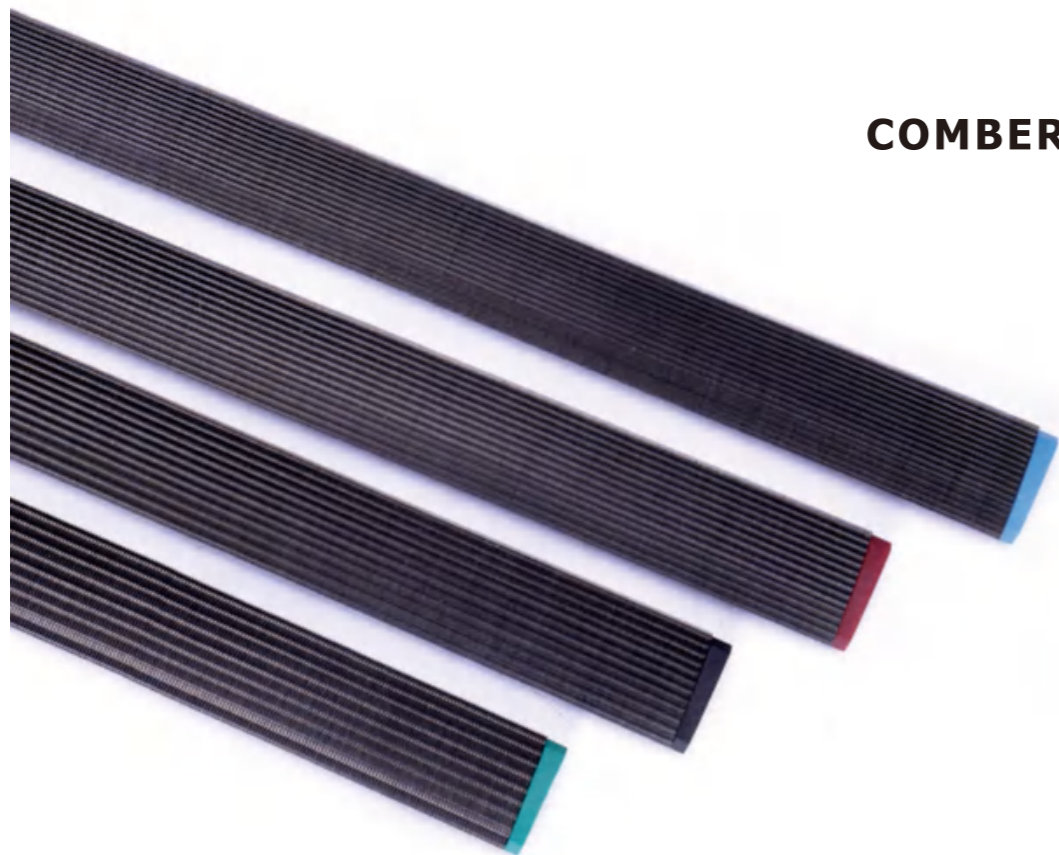
Silver	Silver
Green	Blue
Black	Orange
Red	Green
Red	Green
Blue	Green

About 46100 teeth

BS-609

Silver	Silver
Green	Blue
Black	Orange
Red	Green
Red	Blue
Blue	Blue

About 48980 teeth



COMBER SEGMENT

Type	TPI	Colour		PPSI
5030	5	 Green	 Red	24
5025	5	 Orange	 Red	25
9030	9	 Green	 Blue	52
9025	9	 Orange	 Blue	56
1030	10	 Green	 Green	58
1025	10	 Orange	 Green	62
1225	12	 Black	 Orange	88
1220	12	 Red	 Orange	97
1525	15	 Orange	 White	110
1520	15	 Red	 White	125
1515	15	 Blue	 White	139
1820	18	 Red	 Black	145
1815	18	 Blue	 Black	158

HEART OF CARDING



TOP COMBER

Specification	Width	PPSI	Width of teeth	Height of teeth	Applicable Spinnable Varieties
BRTC-24.326	320 / 326	240	315	49.5	Medium-staple Cotton 16-40S
BRTC-26.326		260			Medium-staple Cotton Long-staple Cotton 21-40S
BRTC-28.326		280			Medium-staple Cotton Long-staple Cotton 32-60S
BRTC-30.326		300			Medium-staple Cotton Long-staple Cotton 32-60S
BRTC-32.326		320			Medium-staple Cotton Long-staple Cotton 40-80S
BRTC-38.326		380			Medium-staple Cotton Long-staple Cotton 50-120S

